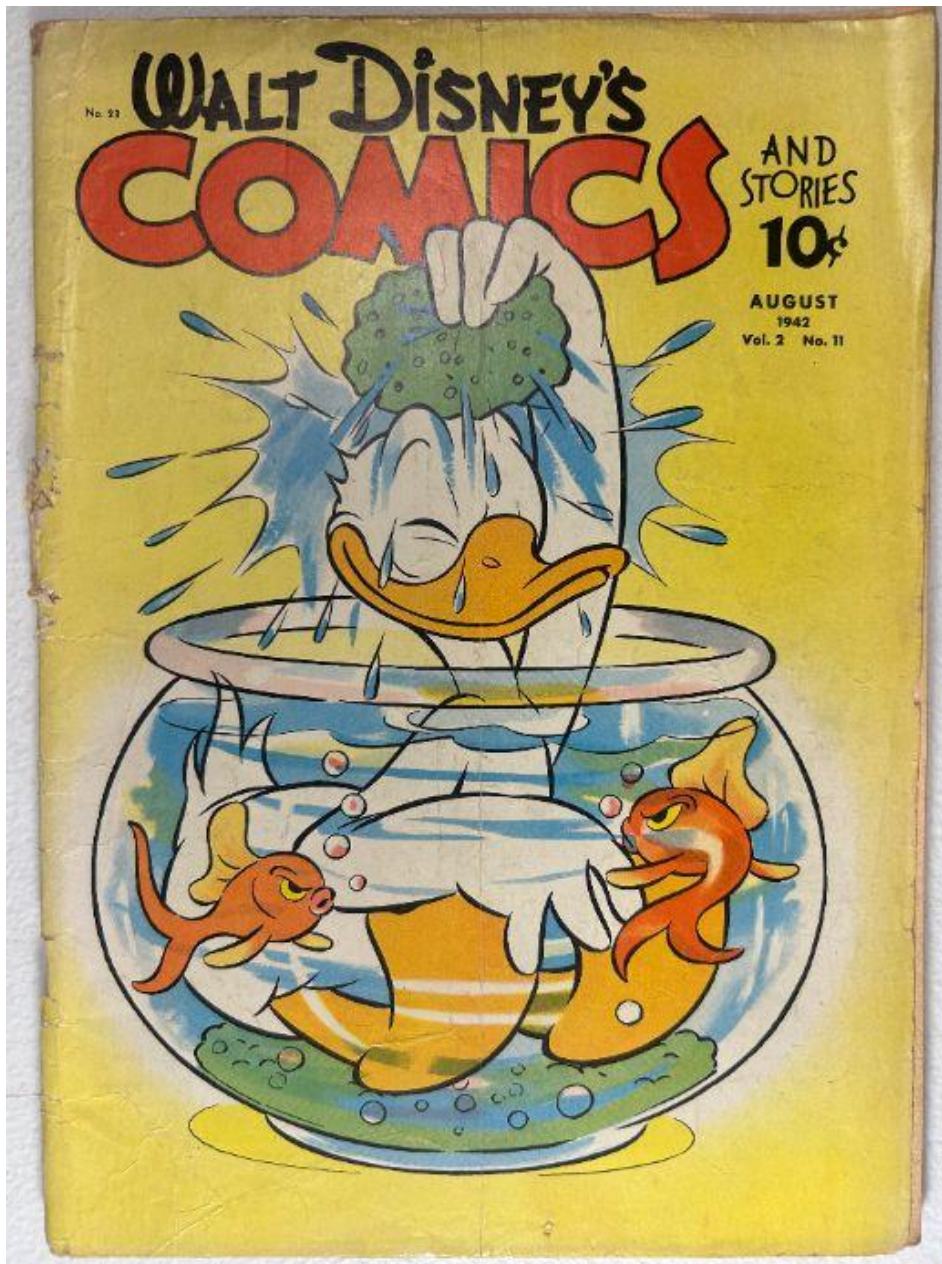


■ **Walt Disney's Comics and Stories – Vol. 2 No. 11 (August 1942)**

Front Cover — Observations (IMG_1243)

Photo Condition & Quality

Clear, high-resolution image showing full cover with accurate color and even lighting.



Scene & Composition

- Donald Duck stands inside a large round fishbowl filled with water.
- Donald holds a green sponge above his head, dripping water onto himself.
- Two orange fish circle him; one tugs at his tail feathers.
- Background is bright yellow fading toward white at the bowl edges.
- Issue text printed at upper right: **August 1942 — Vol. 2 No. 11 — 10¢.**

Physical Condition Findings

- Numerous vertical creases across Donald and the background.
- Multiple color-breaking stress lines along the spine.
- Spine edge exhibits **paper loss**, flaking, and splitting near both staples.
- Corner rounding, most noticeable lower-left and upper-right.
- Bottom edge shows several small chips and abrasions.
- Moderate soiling and handling wear across the yellow background.

Color & Printing Quality

- Strong saturation in oranges, blues, and greens.
- Yellow background slightly faded with light mottling.
- Black outlines print sharply.

Paper & Structural Notes

- Light oxidation at all edges.
- Cover attached at both staples but weakened at spine.

Overall Impression

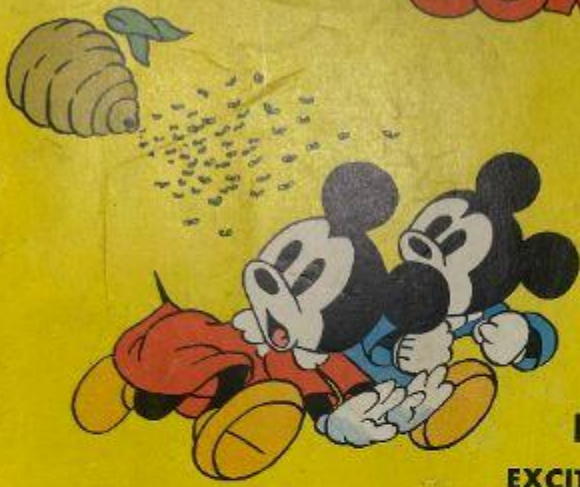
A bright and expressive cover with significant spine damage and moderate edge wear.

Back Cover — Observations (IMG_1244)

Photo Condition & Quality

Even lighting, full-page visibility, and accurate colors.

SUBSCRIBE TO: WALT DISNEY'S
COMICS AND STORIES



12 BIG ISSUES
FOR ONLY
\$1.00

PACKED WITH
FAST MOVING
EXCITING ADVENTURES
OF THE FAMOUS DISNEY CHARACTERS

ENJOY THE LAUGHABLE ANTICS OF THE GANG IN
DISNEYVILLE — DONALD DUCK AND HIS NEPHEWS,
MICKEY AND MINNIE MOUSE, PLUTO THE PUP, AND
MANY OTHERS.

CLEAN INSTRUCTIVE ENTERTAINING

K. K. PUBLICATIONS, Inc.
DEPT. DT POUGHKEEPSIE, NEW YORK

Gentlemen:
Enclosed find one dollar for which please enter the following subscription to
WALT DISNEY'S COMICS AND STORIES Magazine for twelve monthly issues begin-
ning with _____ issue.

Name _____
Street and Number _____
City or Town _____ State _____
Donor's Name _____
Address _____

DONALD METZ
WEST HAVEN, PA.
4 33 124954 AC

Scene & Composition

- Advertisement encouraging subscription to Walt Disney's Comics and Stories.
- Mickey and Minnie sit together reading while a swarm of bees flies overhead into a hive.
- Bottom third contains the subscription coupon.

Physical Condition Findings

- Surface wear across yellow background.
- Edge chips along right side and bottom margin.
- Lower-right corner heavily worn with crease and paper loss.
- Light soiling in coupon area.
- Moderate corner rounding.

Color & Printing Quality

- Reds and yellows remain bold.
- Some fading and discoloration in lighter areas.

Paper Condition

- Uniform tan toning.
- No moisture staining detected.

Overall Impression

Stable back cover with moderate wear and expected aging.

Interior Pages — Observations (IMG_1245–IMG_1249)

Photo Condition & Quality

Clear, bright images showing full panels, margins, and gutters.

Page Color

tan to medium brown

Interior Pages Findings

Artwork & Story Content

Interior content includes:

- **Bucky Bug** (Silly Symphonies) multi-page feature.
- **Donald Duck** sequence ("Ridin' the Rails").
- **Mickey Mouse** hotel/chase storyline.
- Mickey court sequence involving a nuisance warrant.
- Additional text and humor pages including Mickey and Goofy domestic scenes.

All pages appear complete; no missing panels or clipped coupons.

Color & Printing Quality

- Primary colors remain vivid.
- Pastel backgrounds slightly faded.
- Halftone dots consistent with Dell printing.
- Black outlines maintain good density.

Paper Condition

- Moderate edge darkening and oxidation.
- Margin foxing visible throughout.
- Several small corner creases.
- Slight natural waviness; no moisture rippling.
- No tears, stains, or writing evident.

Structural Notes

- Pages secured at both staples.
- Lower staple stress minimally visible inside.
- Paper flexible with no brittleness.

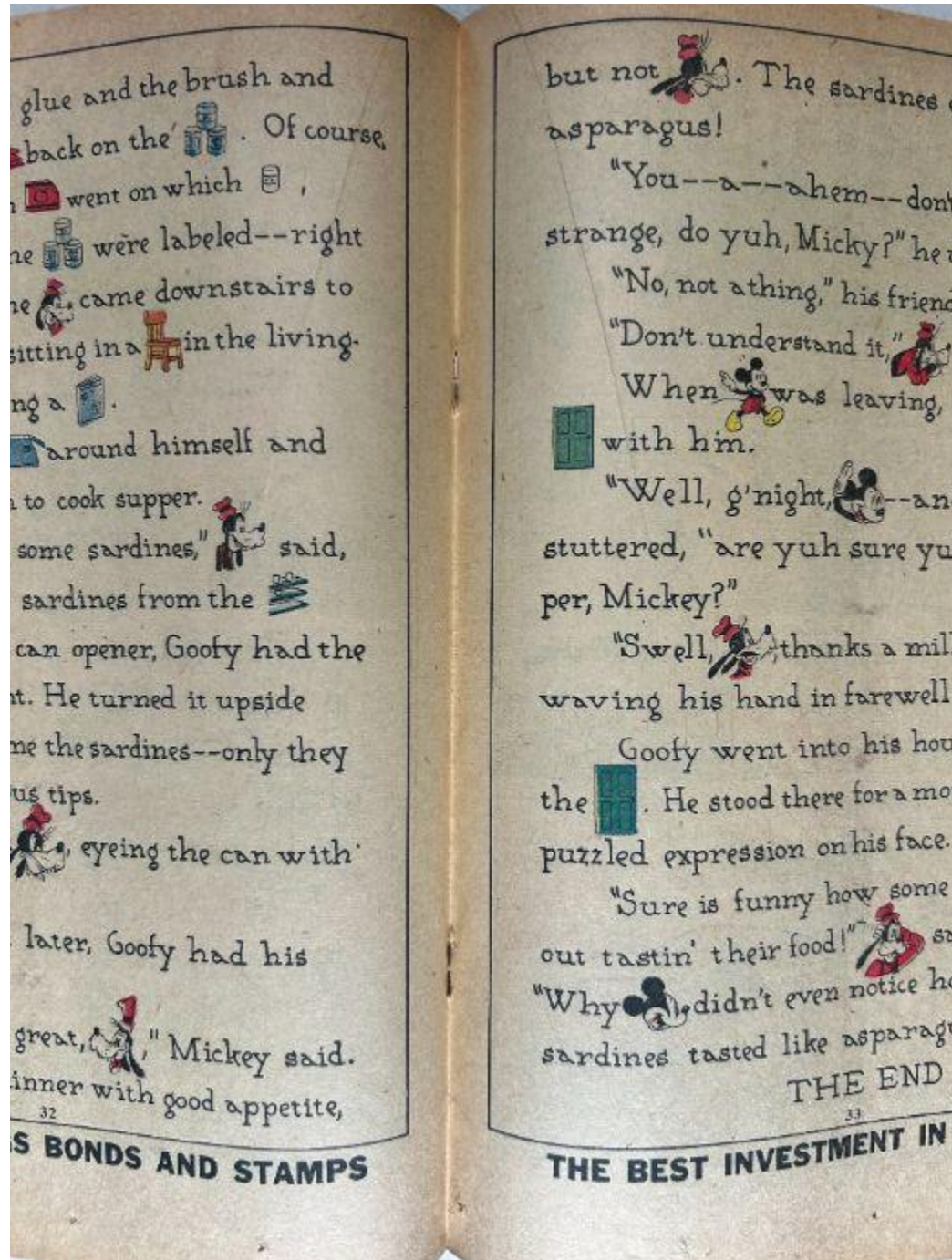
Overall Impression

Complete interior with strong color, stable structure, and typical Golden Age aging.

Centerfold — Observations (IMG_1250)

Photo Condition & Quality

Clear two-page spread with visible gutter and staple positions.



Physical Findings

- Fully attached at both staples.
- Mild tearing around lower staple area.
- Even tan toning; darker at fold.
- Light wrinkles but no major creases.

Overall Impression

Centerfold intact, stable, with expected wear around staples.

Spine — Observations (IMG_1251)

Photo Condition & Quality

High-clarity angled shot showing full spine edge, curvature, and surface texture.



Structural Findings

- Severe **paper loss** along multiple inches of spine.
- Long horizontal tears and breaks in yellow cover stock.
- Multiple **open staple holes**, indicating splitting around staples.
- Forward spine roll present.
- Several color-breaking vertical stress lines.

Surface Condition

- Heavy abrasion along full length of spine.
- Gloss entirely worn away.

Overall Impression

Spine is significantly compromised with extensive material loss and splitting.

Upper Staple — Observations (IMG_1252)

Photo Condition & Quality

Macro image clearly showing metal and surrounding paper fibers.



Staple Findings

- Heavy tearing around staple entry forming an irregular cavity.
- Metal exhibits medium oxidation.
- Paper fibers split and frayed across a wide radius.
- Color layer flaked away around staple.

Overall Impression

Upper staple attachment weakened with significant paper damage.

Lower Staple — Observations (IMG_1253)

Photo Condition & Quality

Close-up view highlighting staple legs, cavity, and surrounding paper.



Staple Findings

- Deep staple cavity with missing paper mass.
- Staple legs uneven, indicating stress or partial pull-through.
- Oxidation present; some rust transfer to paper.
- Sheared fibers and multi-layer separation extending outward.

Overall Impression

Lower staple is structurally unsound with advanced tear and cavity formation.

Brittleness Test — Observations (IMG_1254)

Photo Condition & Quality

Clear, close-up image showing page corner flex.



Findings

- Page bends smoothly without cracking.
- No chipping along bend line.
- Paper dry but still structurally sound.

Overall Impression

Paper shows age but remains flexible and non-brittle.